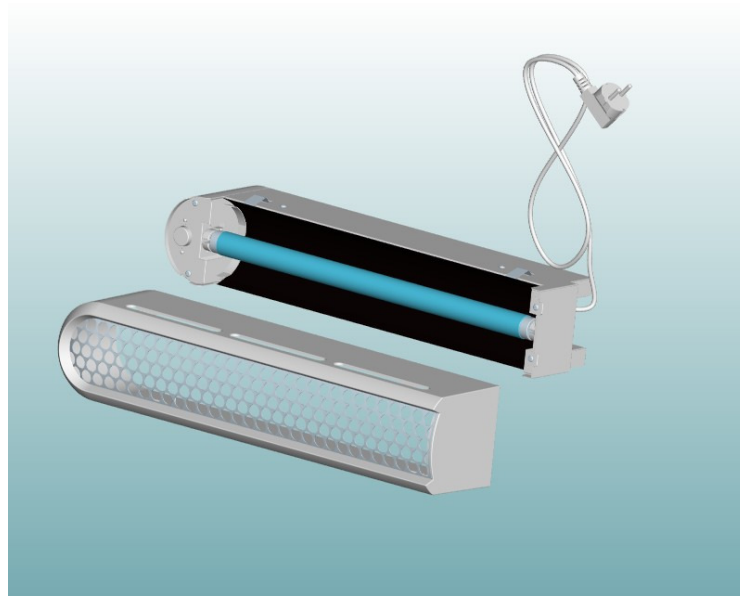




Flex-trap insect exterminator type: Flex-trap 45



Installation and service manual

Please read carefully, before using your unit!

The information in this service manual is based on the latest information, and is provided subject to alterations. We reserve the right to change the construction and/or configuration of the product at any time without obligation to modify earlier versions of the product.

For further data: www.alcochem.nl



A) Read this manual carefully before taking any action with regard to the Flex-trap 45 insect exterminator.

Congratulations with the purchase of this high quality electric insect exterminator. Before using this model we would like to ask you to read this manual carefully. If you have questions afterwards feel free to contact your local supplier.

The information in this manual is based upon the latest information, and is provided subject to alterations. We reserve the right to change the construction and/or configuration of the product at any time without obligation to modify earlier versions of the product.

Store this manual carefully for future use.

B) Safety

When using electric tools, basic precautions to reduce risk of fire, electric shock and personal injury, must always be followed including the following:

- Consider work area environment. Keep work area clean and well lit.
- The Flex-trap 45 should be connected to the mains (230 or, respectively, 240V AC, 50Hz, unless otherwise specified)
- Do not use power tools in the presence of flammable materials.
- Do not abuse cable. Keep it away from heat, oil and sharp edges.
- Maintain fly control system with care. Keep the fly control system clean for better and safer performance. Follow instructions for lubricating and changing accessories.
- Disconnect mains, when not in use, before servicing, and when changing accessories or components.
- Make a habit of checking to see that wrenches and adjusting service tools are removed from the fly control system before turning it on.
- The use of any accessory or attachment other than recommended in these operating instructions or the catalogue may present a risk of personal injury.
- The fly control system complies with the relevant safety rules. Repairs should only be carried out by qualified persons using original spare-parts, otherwise this may result in considerable danger to the user.
- Use a safe mains connector with proper ground.
- Wiring in the fly control system meets safety standard EN 60335-2-59
- Always leave repairs (other than cleaning, glue board replacement or replacing the lamp) to your dealer/distributor.
- The light from the ultraviolet lamps is harmless to people and animals even after prolonged exposure.



Note: In case of replacement of the lamps and/or the starters use components of the same specifications. Only use genuine spare-parts for service and maintenance



C) Receipt of equipment

While unpacking, check for any signs of shipment damage and, if found, notify both transporter and supplier in writing within 8 days after receipt with full details of the damage that has occurred and retain the equipment and packing materials for inspection. Check that all parts have been received as ordered. Make sure that all packaging is removed from the machine before use.

D) Installation

To achieve maximum effectiveness, the following installation notes must be considered:

- Choose a place where the unit can be reached and cleaned easily.
- Avoid obstacles, which limit the possibility for the insects to reach the apparatus.
- Avoid draught by fans or air shafts and avoid direct sunlight.
- Use good quality mounting material.
- Use a safe mains connector with ground.



Note: fly control systems may never be hung directly above uncovered food!!

E) Maintenance

The fly control system requires no maintenance other than cleaning, changing of the glue board and lamp replacement.

1) Cleaning

- a) Disconnect the device from the mains.
- b) Wipe the collection tray and casing clean with a damp cloth or one moistened with methylated spirits.

2) Changing the glue board (see drawing K; Mounting the glue board)

- a) The glue board (pos 2) can be replaced when the front cover is removed (pos 1)
- b) Insert a new glue board from the top side as shown in picture H. Remove protective sheet before the glue board is inserted in the guide rails (pos 3). Slide the glue board into the rails until the glue board is blocked by the block pins located in the middle of the slide channel. For replacement of the glue board take out the old glue board first.
- c) Put the front cover back in position.



3) Lamp replacement

We recommend to replace the UV-A lamp once every year before the main insect season starts:

The lamps should in any case be replaced after 9,000 burning hours.

- a) Disconnect the device from mains.
- b) Remove the front cover.
- c) Turn the UV lamp 90° (two clicks) and remove the lamp.
- d) Place new lamps in the apparatus and turn them 90° (two clicks).
- e) Mount all piece parts in reverse sequence.

If the UV lamp starts with difficulty or fails to start, replace the starter, which is located in the upper cover, next to the UV lamp

F) Specifications

Specifications of the flex-trap 45 unit are outlined below:

Technical name	: Flex-trap 45 insect control system
Area coverage (m ²)	: 45 square meter per unit
Light source (W) (UV-A)	: 1 pieces of 15 watt shatterproof UV-A lamp
Type of UV lamps	: UV Lamps RoHS certified
Electrical supply (V)	: 220-240, other voltages upon request
Catch specifications (V)	: by means of long life glue board
Power consumption (W)	: 22
Weight (kg)	: 2
Material	: coated steel casing, cover and grid made of ABS plastic
Glass protection	: shatterproof tubes included with 95% UV-A transparency
Degree of protection (IP)	: IP 21 (drip proof)
Guarantee	: 1 year return to base
Int. building norm	: acc. EN 60335-2-59 int. standard for insect exterminators
Lamp life time (h)	: 9000
Dimensions (L*D*H)	: 550 * 120 * 120mm
CE-approval	: yes
Mounting position	: wall mounted-flag mounted or ceiling mounted
Cable	: included
Packaging	: neutral cardboard box included
Manual	: enclosed with the unit in English
Service	: unit can be serviced without special tools



G) Exploded view

Table 1: Descriptions of exploded view parts see section j

Pos.	Description
1	front cover
2	grid
3	chassis
4	glue board holder
5	starter
6	starter holder
7	ballast
8	mains plug chassis part
9	spring
10	UV-A lamp
11	glue board
12	mains plug

H) Spare parts list

For position numbers see drawing views in section J

Table 2: Recommended spare parts

Pos.	Description	Part number	Amount
5	starter	2.08.1001	1
10	15w UV-A lamp shatterproof	2.04.0520	1
11	glue board		4



I) Certification and declaration

All Flex-trap 45 systems comply with the EU-directive on machine safety
The unit and spare part components are in full compliance with the CE directive and the WEEE / RoHS directives. The EC declaration of conformity is listed below:

CE declaration of conformity

We, Alcochem Hygiene
Metaalweg 6
3751LS Bunschoten, The Netherlands
Tel: +31 (0)33-4557259
Fax: +31 (0)33-4557269
www.alcochem.nl

Declare, under our responsibility, that the imported products:

Type: Flex-trap 45 insect control unit

Complies with the following European standards:

- * EN 60335-1 Safety of household and similar electrical equipment. Part 1: General requirements.
- * EN 60335-2-59 Safety of household and similar electrical appliances. Part 2: Particular requirements for insect killers.
- * EN 55014 Limits and methods of measurement of radio disturbance characteristics of electrical motor-operated and thermal appliances for household and similar purposes, electrical tools and similar electric apparatus.
- * EN 61000-4-5 Surge immunity requirements (1.2/50 μ s and 70/100 μ s surge)
- * EN 61000-3-2 Electromagnetic compatibility (EMC) Part 3: Limits Section 2: Limits for harmonic current emissions (equipment input current <16 A per phase) (IEC 1000-3-2:1995)

All according to the definition of the Low Voltage Directive 73/23/EEC and the EMC Directive 89/336/EEC

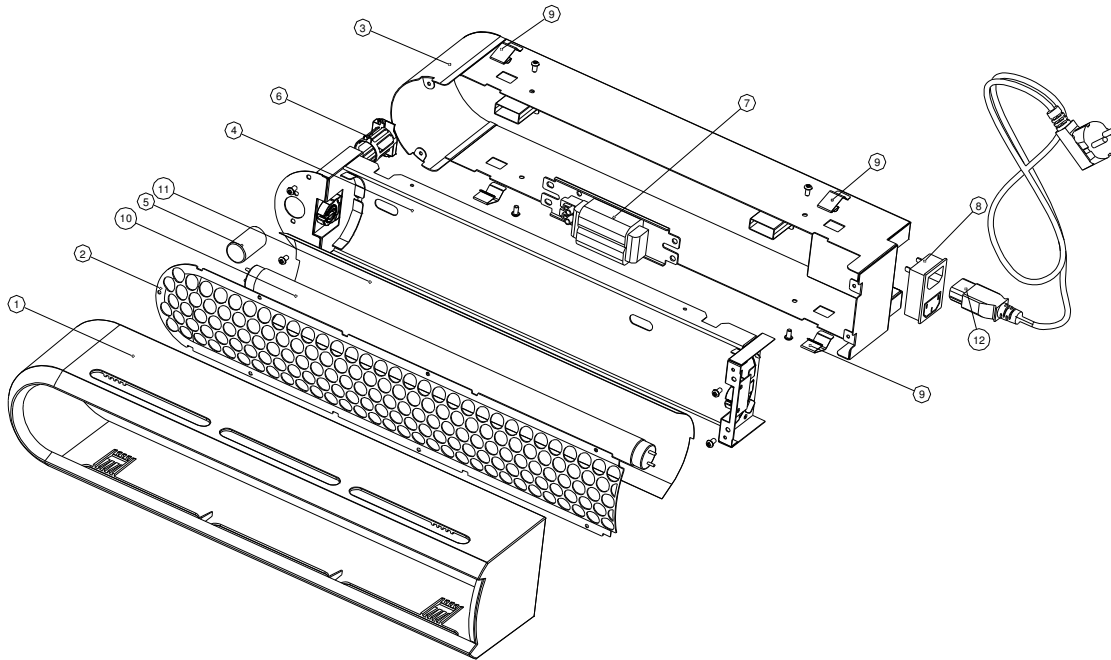
Place: Bunschoten, The Netherlands
Date: December 2008

Authorized Person:
Mr. R van Aalst, director Alcochem Hygiene
Signature (electronic)





J) Drawing view:



K) Mounting the glue board

